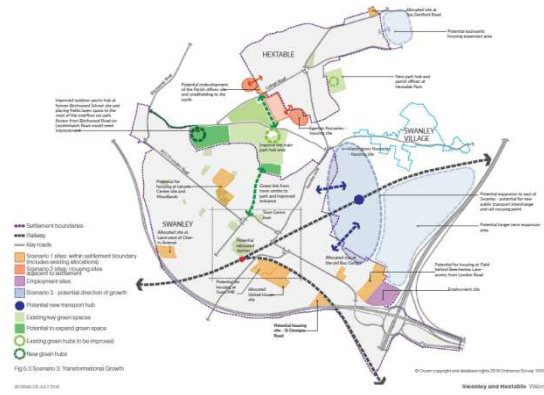




Improving Transport & Connectivity in West Kent



West Kent Partnership - 20 January 2017

*David Joyner - Transport & Development Manager West Kent
& Chairman WKP Infrastructure & Transport Group*



Improving Transport & Connectivity – Context



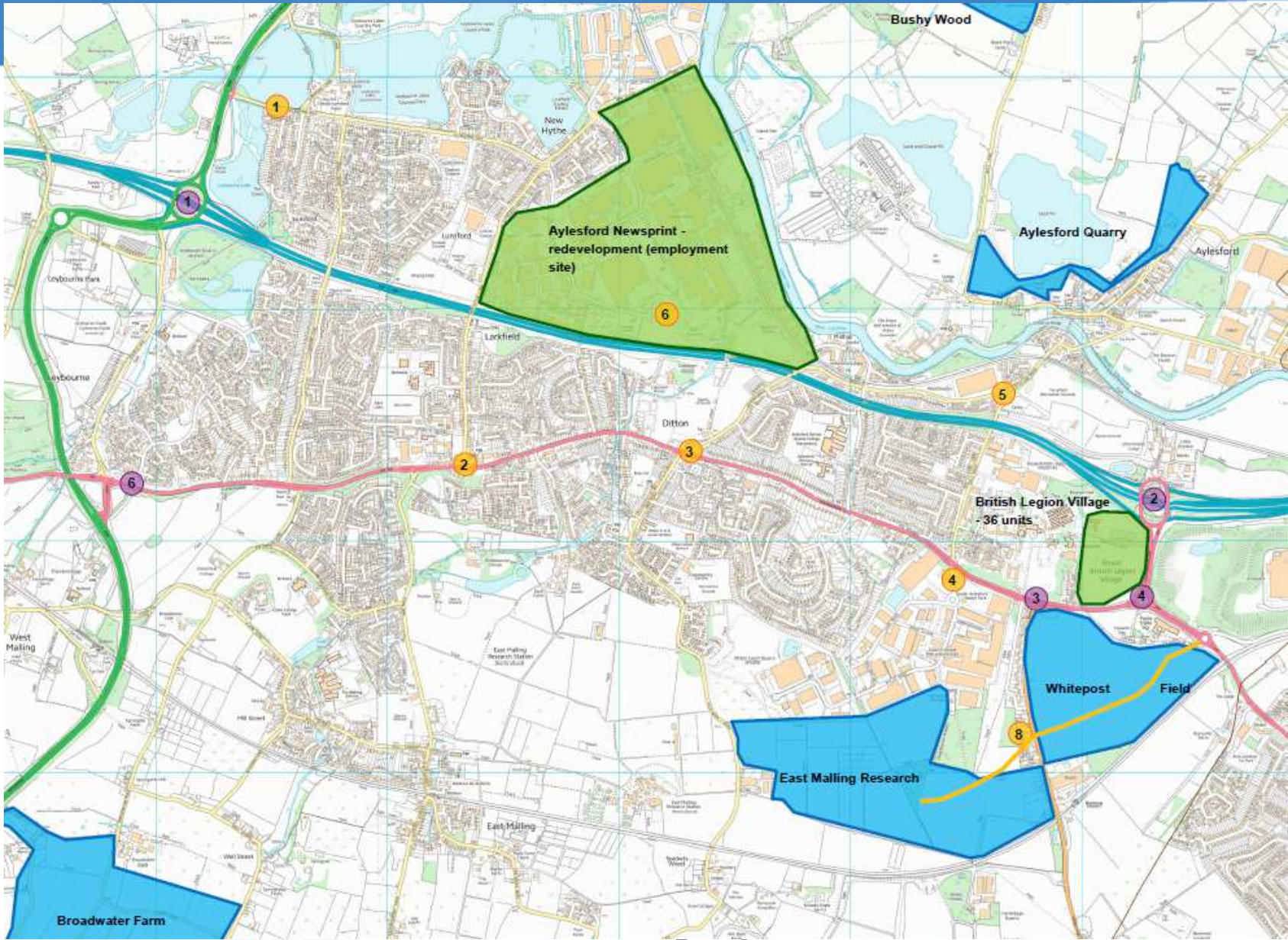
WKP Infrastructure & Transport Group - joint working to deliver transport outcomes: Highway Schemes (motorway junctions, A21, A228, A20, A26, A264). Public Transport (punctuality, service improvements)

Local Transport Plan 4 and Local Plans – Opportunities for development to help address current transport pressures. Short term improvements – traffic management, parking, information ...

Growth and Investment Framework and Local Growth Fund.

- A20 corridor Malling – Aylesford
- Swanley – Town Centre & North East extension
- A264/ A26 Tunbridge Wells

Local Plans & LGF Schemes – A20 Malling to Aylesford



Master Vision - Swanley

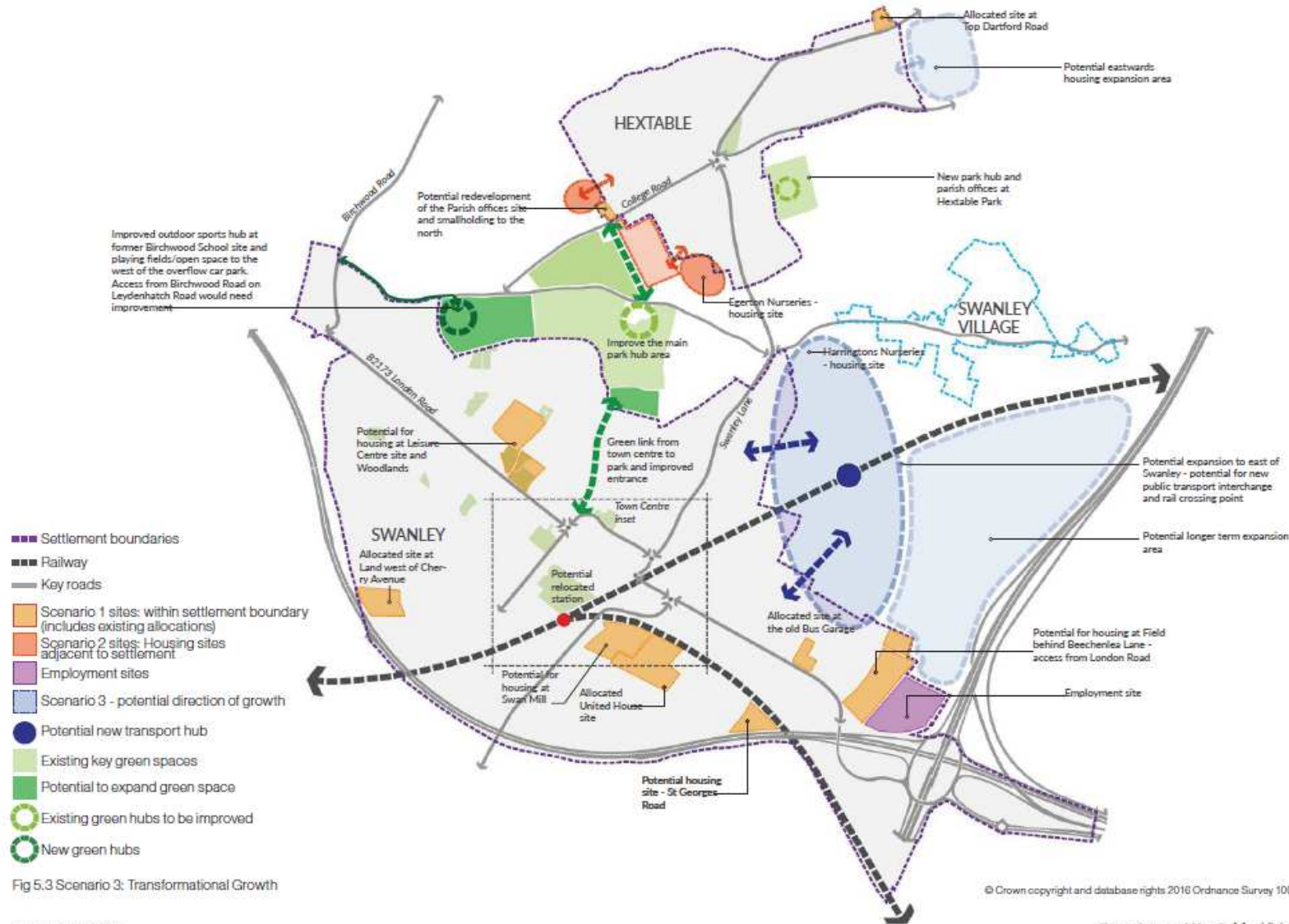


Fig 5.3 Scenario 3: Transformational Growth

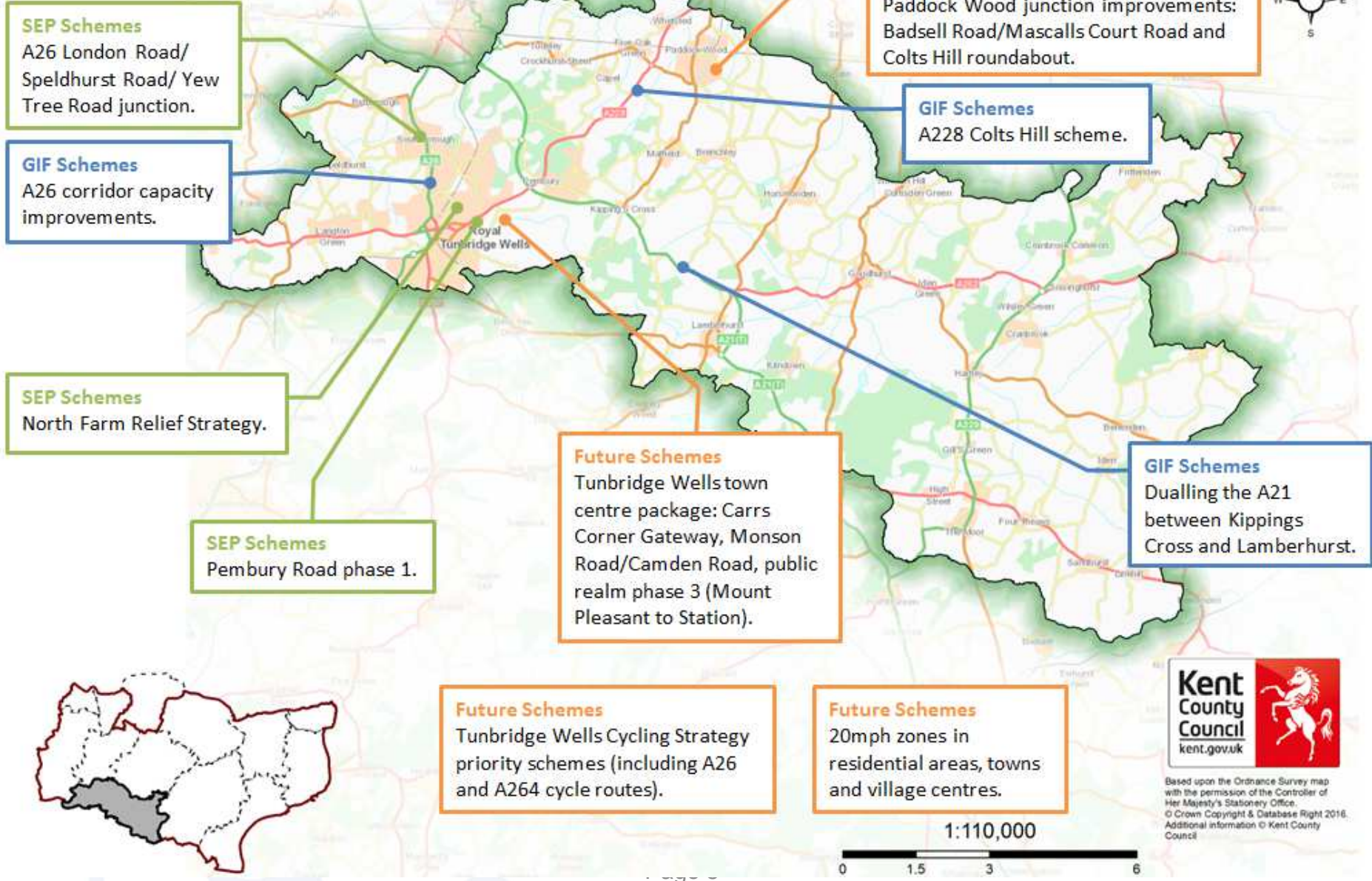
© Crown copyright and database rights 2016 Ordnance Survey 100019428



District Policies & Transport Priorities – Tunbridge Wells



Tunbridge Wells' Transport Priorities



Improving Transport & Connectivity – Next Steps



Updating Local Transport Strategies in line with new Local Plans – strategic approach to housing to deliver major transport infrastructure.

Quick wins/ short term improvements – traffic management, sustainable transport measures, information and promotion.

Need good schemes (enabling housing & jobs) ready to deliver.

County & District Policies working together. Governance through WK Highways Board – transport strategies, prioritisation of schemes, discretionary public transport, parking ...

Bus Business Perspective – Robert Patterson

Rail Update – Stephen Gasche

Kent Connected – Kerry Prescott & Annette Bonner